

EMERALD LAKE HEIGHTS SEWER MAINTENANCE DISTRICT

**Information on Proposed Sewer Service Rate Increases
for Fiscal Years 2020-21 through 2022-23**

**To be Considered by the County of San Mateo Board of
Supervisors during a Public Hearing on:**

**Tuesday, July 21, 2020 at 9:00 a.m.
Board of Supervisors Chambers
Hall of Justice and Records
400 County Center, Redwood City**

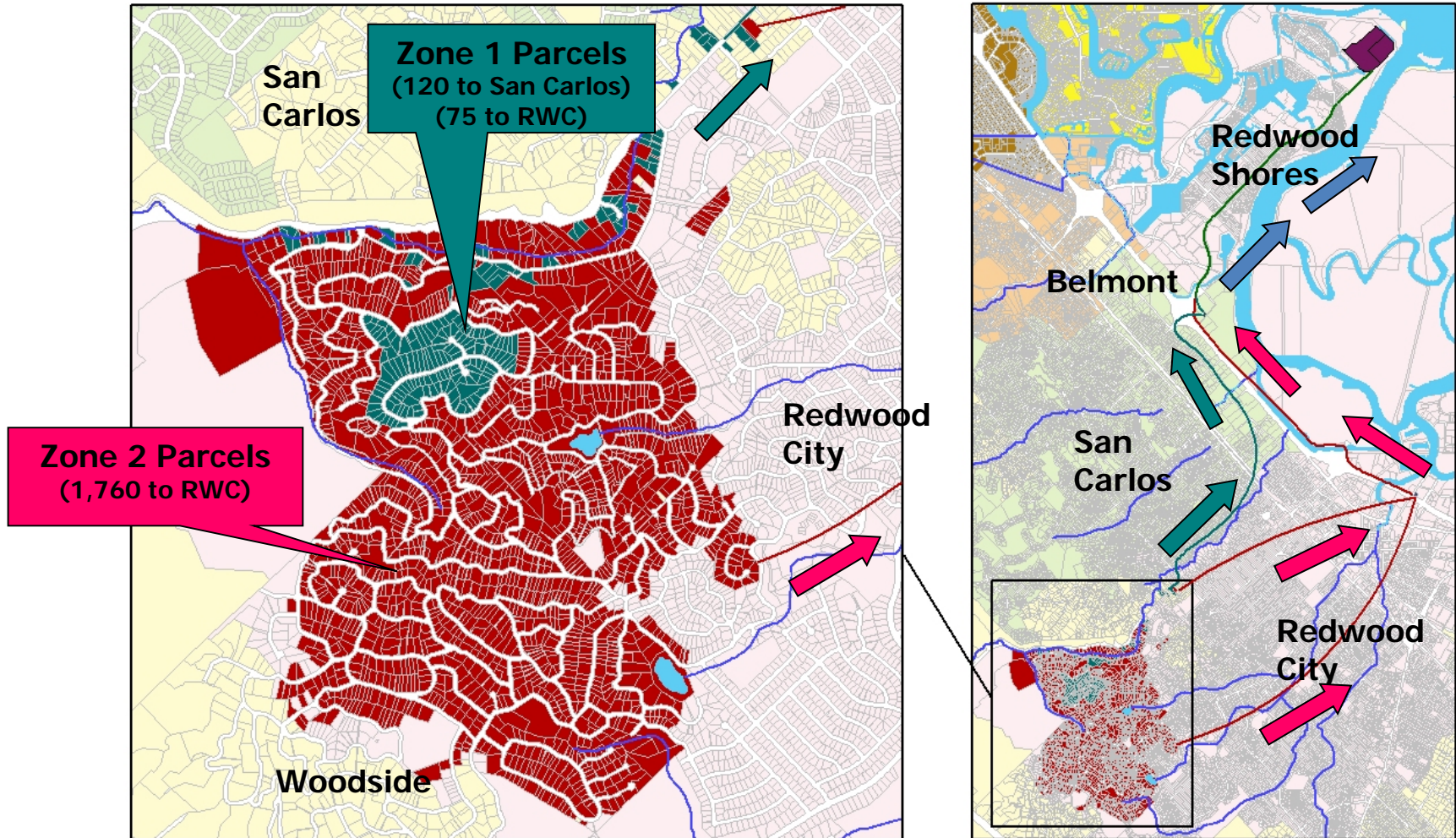


OVERVIEW

- ***District Information***
- ***District Funding***
- ***Programs, Services and Compliance***
- ***Elements of the Sewer Service Rates***
 - ***In District Costs***
 - ***Out of District Costs***
- ***Proposed Rates for Consideration***
- ***Rate Setting Timeline***

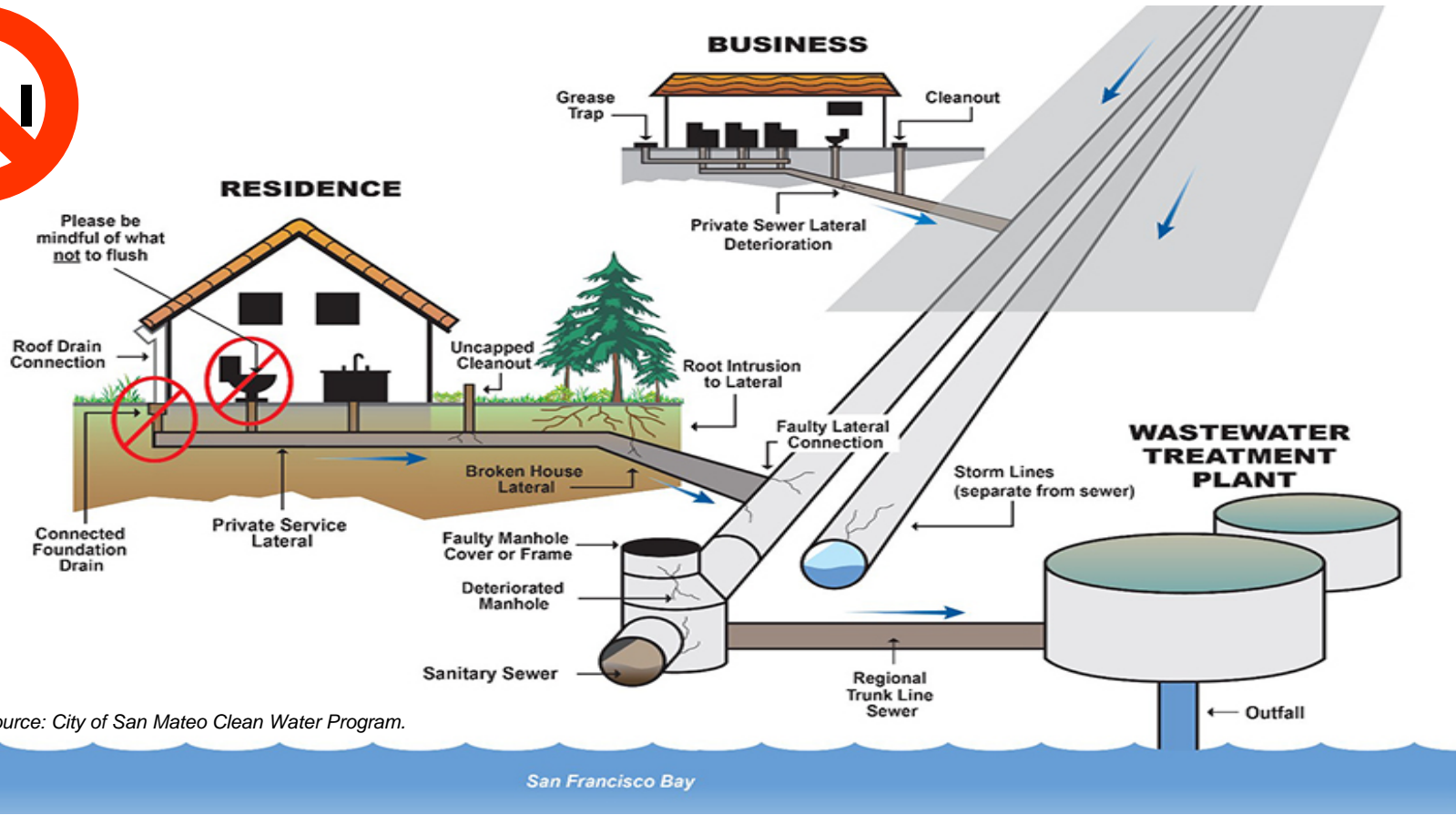
DISTRICT INFORMATION

SEWAGE FLOWS THROUGH CITY OF SAN CARLOS & REDWOOD CITY TO THE SILICON VALLEY CLEAN WATER (SVCW) SEWAGE TREATMENT PLANT IN REDWOOD SHORES



DISTRICT INFORMATION – HOW DOES A SEWER SYSTEM WORK?

EACH DISTRICT RELIES ON DOWNSTREAM AGENCIES TO TRANSPORT SEWAGE COLLECTED BY THE DISTRICT TO THE TREATMENT PLANT



Source: City of San Mateo Clean Water Program.

DISTRICT SPECIFIC STATISTICS

District	Age (yrs) *	Number of Connections **	Equivalent Residential Units (ERU)	Downstream Transport Agency	Treatment Facility
ELHSMD Zone 1	73	191	209	City of San Carlos/City of Redwood City	Silicon Valley Clean Water (SVCW)
ELHSMD Zone 2	37	1,479	1,529	City of Redwood City	

**Age based on District formation date*

*** Based on 2019-20 Sewer Service Charge Report*

District	Miles of Pipe	Percentage in Easements	Percentage in Streets
ELHSMD Zone 1	2.3	64.5%	35.5%
ELHSMD Zone 2	27.6	37.4%	62.6%

SEWER/SANITATION DISTRICTS IN COUNTY GOVERNMENT

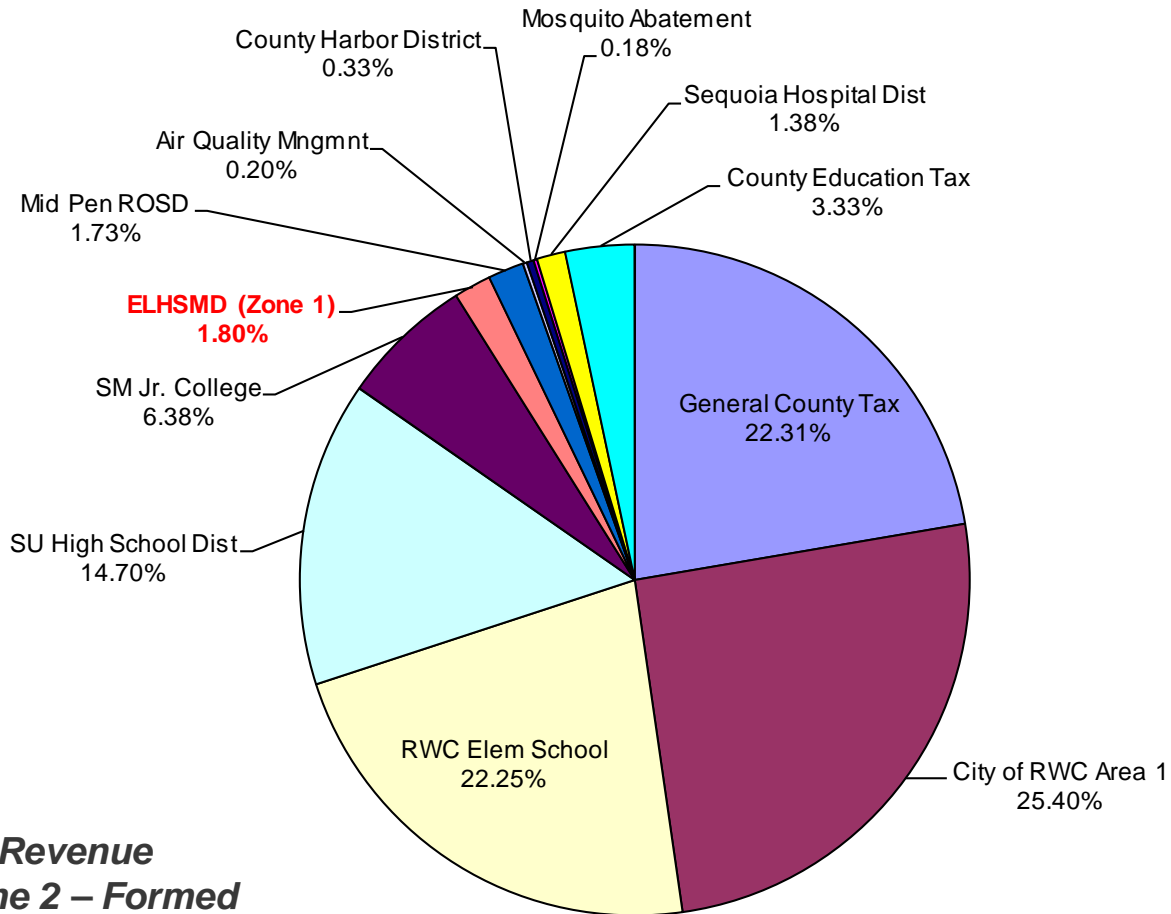
EACH DISTRICT IS AN INDEPENDENT ENTITY WITH ITS OWN SEPARATE BUDGET

- Each District's Governing Board is the Board of Supervisors
- The District receives Sewer Service Charges and limited property taxes within the District boundaries to fund sewer service
- The Sewer Service Charges are a Fee For Service, Not a Tax
- The District collects Sewer Service Charges on the Tax Bill because it is least costly way to collect the fee

WHERE DOES MY PROPERTY TAX MONEY

GO?

ELHSMD (Zone 1) Sample Property Tax Allocation (TRA 009-033)



Note: No Property Tax Revenue Allocation for Zone 2 – Formed After Proposition 13

Note: ELHSMD allocation of a portion (1.80%) of the property tax is \$21,751 for FY 2018-19.



PROGRAMS, SERVICES AND COMPLIANCE

- Purchased shared maintenance equipment (CCTV camera, flushing/vacuum trucks, and Vac-Con flusher-vacuum truck)
- Sanitary Sewer Overflow (SSO) Response, Reporting, Water Quality Monitoring, and Public Awareness Program
- Development and continuous updating of Sewer System Management Plan (SSMP)
- Continue to provide 24/7 emergency response to clear blockages in private laterals and services during COVID-19 pandemic



PROGRAMS, SERVICES AND COMPLIANCE

POLLUTION PREVENTION/PUBLIC AWARENESS PROGRAM



COUNTY OF SAN MATEO
PUBLIC WORKS

Translate Departments Career Contact Us


Search

Home Services Projects Permits Info for Residents About Us

For health-related coronavirus updates, go to smchealth.org/coronavirus. Questions about the Shelter in Place Order? Go to our [Shelter in Place FAQs](#). For the latest updates from the County, go to: www.smcgov.org.

Home > Services > Utilities

Sewer Services



"FLUSHABLE" DOES NOT MEAN FLUSHABLE

Cleaning wipes, baby wipes, facial wipes, and paper towels are some of the biggest causes of (or contributors to) sewer back-ups in the County of San Mateo Sewer Districts. That's right - even if the package says "flushable" or "disposable", they should NEVER be flushed. They belong in the trash.

Flush only toilet paper, put trash in the trash can. Help prevent costly sewer problems and keep our environment safe from sanitary sewer backups and overflows!

FLUSH ONLY THE "3 P'S":

- Pee
- Poop
- toilet Paper
- No Wipes. No Paper Towels.

To report a sewer backup, call: (650) 363-4100 (24hr/day)

[FIND MORE INFORMATION HERE >>](#)

In May 2020 due to COVID-19 shelter-in-place orders and to increase awareness about not flushing cleaning and sanitizing "flushable wipes" the above message was added to the sewer district website: <http://www.smcgov.org/sewers>

PROGRAMS, SERVICES AND COMPLIANCE

POLLUTION PREVENTION/PUBLIC AWARENESS PROGRAM

AVOID SEWER BACKUPS AND OVERFLOWS BY KEEPING TRASH OUT OF YOUR TOILET

CLOG

Items shown: Cotton swabs & makeup pads, Tampons, maxi pads & their applicators/wrappers, Kitty litter, Syringes, Paper towels and shop towels, Diapers, Dental Floss, Plastics and food wrappers, Condoms and their wrappers, Hair, Prescription and OTC medications.

Did you know?
Cleaning wipes, baby wipes and facial wipes are one of the biggest causes for contributors to sewer back-ups in the County of San Mateo Sewer Districts. That's right- even if the package says "flushable" or "disposable", they should NEVER be flushed. They belong in the trash.

Flush ONLY toilet paper. Put trash in the trash can.
For more information please visit our website at www.smcgov.org/sewers or call us at 650-363-4100.

Be Sewer Savvy:
Notes, tips & tricks to help keep your sewer pipes in tip-top shape.

- ✓ Protect your home
- ✓ Protect your business
- ✓ Avoid costly repairs

And prevent water pollution, too!

Beginning in 2012, brochures have been distributed to customers during service calls and mailed to customers upstream of a sanitary sewer overflow. Copies are also available on website at <http://www.smcgov.org/sewers>

PROGRAMS, SERVICES AND COMPLIANCE

SANITARY SEWER OVERFLOWS (SSO)

District	2015	2016	2017	2018	2019	2020 (to date)
ELHSMD Zone 1	1	2	0	2	1	0
ELHSMD Zone 2	5	3	4*	1	2	3

Primary Causes of SSOs: Roots, Paper Towels, Grease

* Storm Damage/Mudslide and Pipe Collapse (3 SSOs)

Preventative maintenance on District sewer mains are being performed at frequencies ranging from 12 to 36 months, depending on conditions.



**The toilet is only meant
to flush the three P's—
pee, poop and paper.**
toilet

DISTRICT EXPENSES

IN DISTRICT COSTS:

- ***Operation and Maintenance***
- ***Regulation Compliance***
- ***District Projects***



OUT OF DISTRICT COSTS:

- ***Sewage Transport and Treatment***
- ***Downstream Agency Capital Improvement Projects***



ELEMENTS OF THE SEWER SERVICE RATES **– CAPITAL IMPROVEMENT PROJECTS (CIP)**

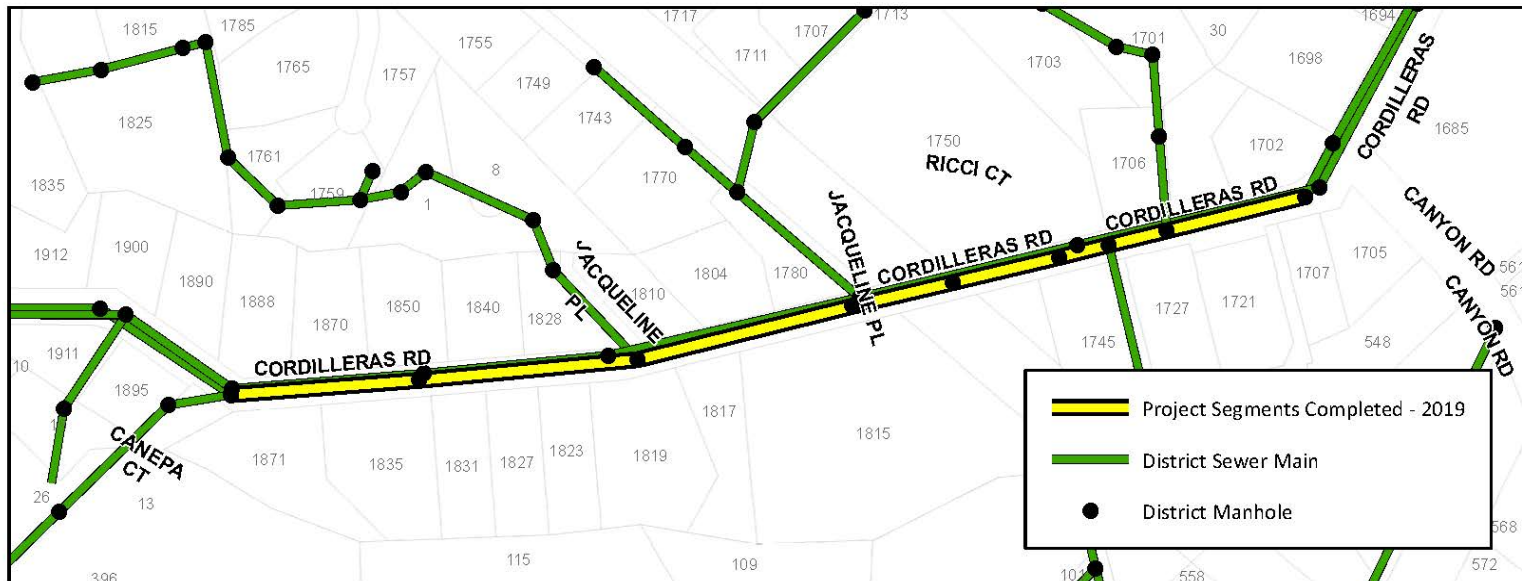
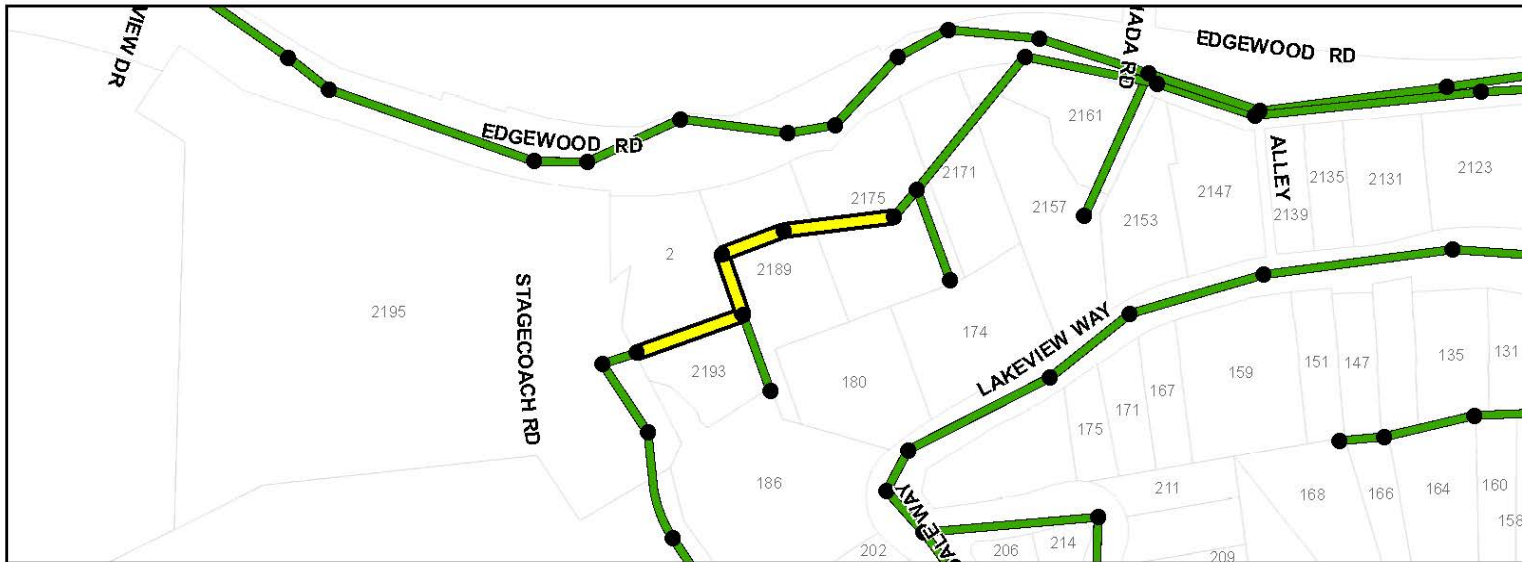
HIGH PRIORITY CIPs IDENTIFIED IN EACH DISTRICT THROUGH MASTER PLANS AND CONDITION ASSESSMENTS

- ***Improvements are recommended based on the following:***
 - ❖ ***Lack of capacity in pipe***
 - ❖ ***Excessive maintenance costs***
 - ❖ ***Structural defects in pipe***

- ***Portions of your Sewer Service Charges collected are used to pay for improvements.***



COMPLETED CAPITAL IMPROVEMENT PROJECTS



ELEMENTS OF THE SEWER SERVICE RATES **- FUTURE PLANNING**

FUTURE PROJECTS AND ESTIMATED COSTS

CIP Projects in Zone 2

Replacement of 16 grinder pumps	\$200,000
Replacement or Rehabilitation of Manholes Susceptible for Root Intrusion	\$1,000,000

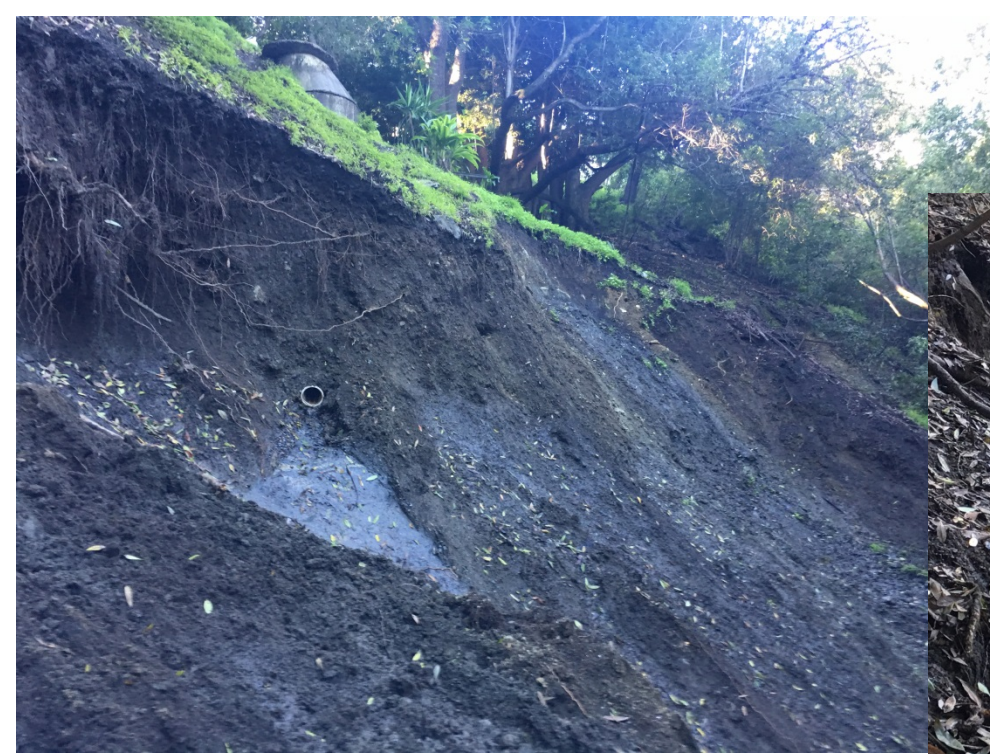
Permanent Replacement of Sewer Mains Damaged by 2017 Winter Storms in Zone 2 (Unanticipated Projects)

655 Park Rd. Sewer Repair (Mudslide)	\$750,000
3650 Oak Knoll Dr. Sewer Repair (Mudslide)	\$1,000,000



ELEMENTS OF THE SEWER SERVICE RATES – RESPOND TO DISASTERS

2017 WINTER STORM DAMAGE AT 3650 OAK KNOLL DR.



ELEMENTS OF THE SEWER SERVICE RATES – RESPOND TO DISASTERS

TEMPORARY REPAIR AT 3650 OAK KNOLL DR.



ELEMENTS OF THE SEWER SERVICE RATES – OUT OF DISTRICT COSTS

- *Sewage Transport, Treatment, and Disposal*
- *Downstream Agency Capital Improvement Projects*

ELEMENTS OF THE SEWER SERVICE RATES **– OUT OF DISTRICT COSTS**

SEWAGE TRANSPORT, TREATMENT, AND DISPOSAL

District has Agreements for sewage transport through City pipes with treatment and disposal at the SVCW

- ***Agreement with the City of San Carlos***
 - ***Requires payment of 85% of City rate***
 - ***City increases of 5% in 2017-18, 5% in 2018-19, and 4.5% in 2019-20 – (total 14.5% over three years)***
 - ***4.5% average annual City rate increases anticipated for FYs 2020-23***
 - ***Based on number of connections***



ELEMENTS OF THE SEWER SERVICE RATES **– OUT OF DISTRICT COSTS**

SEWAGE TRANSPORT, TREATMENT, AND DISPOSAL

- ***Agreement with the City of Redwood City***
 - ***Requires payment of 100% of City rate***
 - ***City increases of 4.5% average annual rate increase for FYs 2019-22***
 - ***Based on number of connections, with 4 non-residential properties which are based on water consumption***



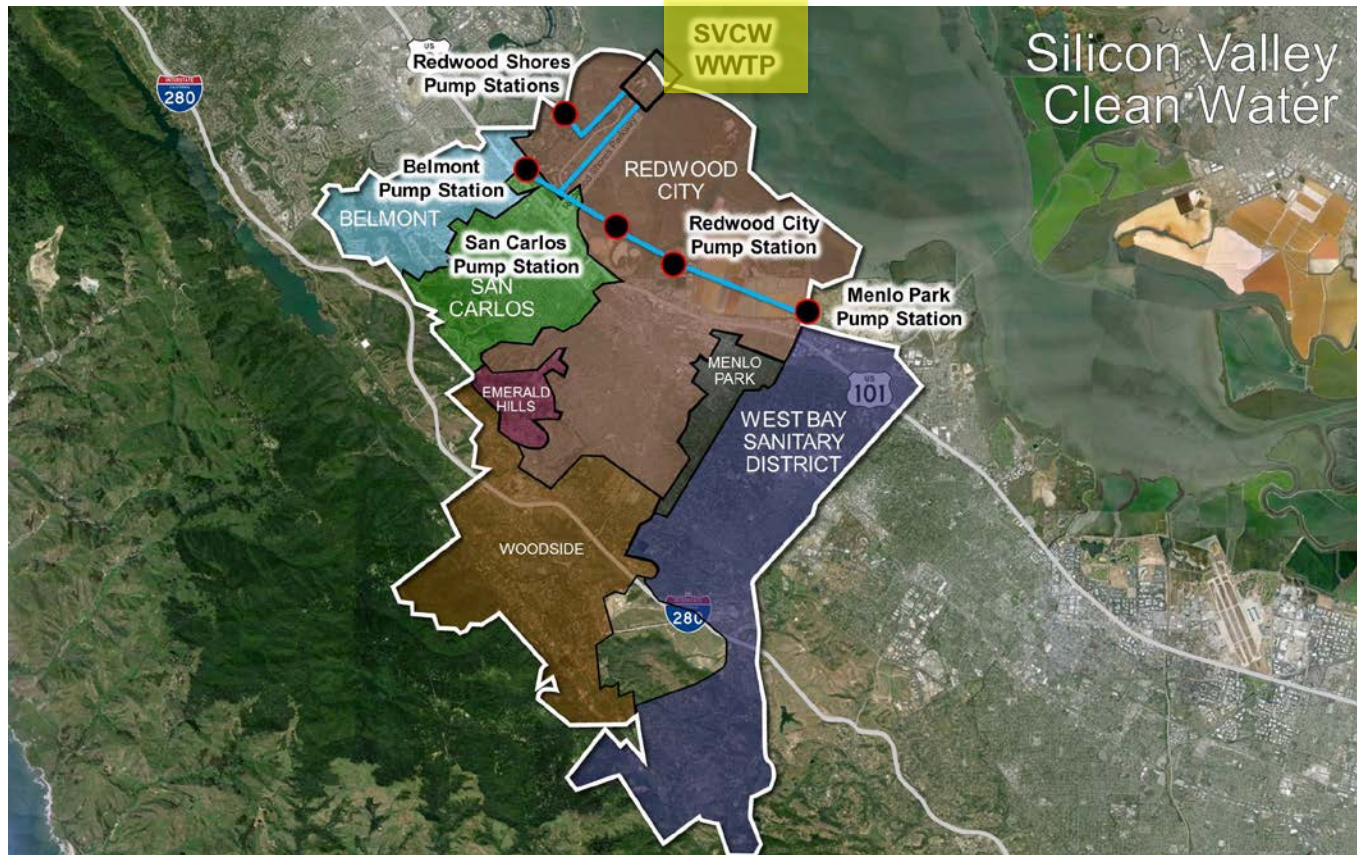
ELEMENTS OF THE SEWER SERVICE RATES **– OUT OF DISTRICT COSTS**

WHAT AFFECTS THE AMOUNT THE DISTRICT PAYS?

- ***Sewer Service Rates established by San Carlos and Redwood City***
- ***Capital Improvement Projects at the SVCW:***
 - ***Capital improvements will replace equipment which have reached the end of their useful lives***
 - ***SVCW has spent \$455 million thru February 2020 (over 12 years) on Capital Improvement Projects***
 - ***In March 2020, SVCW estimates \$477 million in CIP expenditures over the next 7 years***
 - ***SVCW will be charging the member agencies (Redwood City, San Carlos, Belmont, and West Bay Sanitary District) for the improvements***



ELEMENTS OF THE SEWER SERVICE RATES – OUT OF DISTRICT COSTS



See <https://svcw-rescu.org/> for updates about the RESCU Program

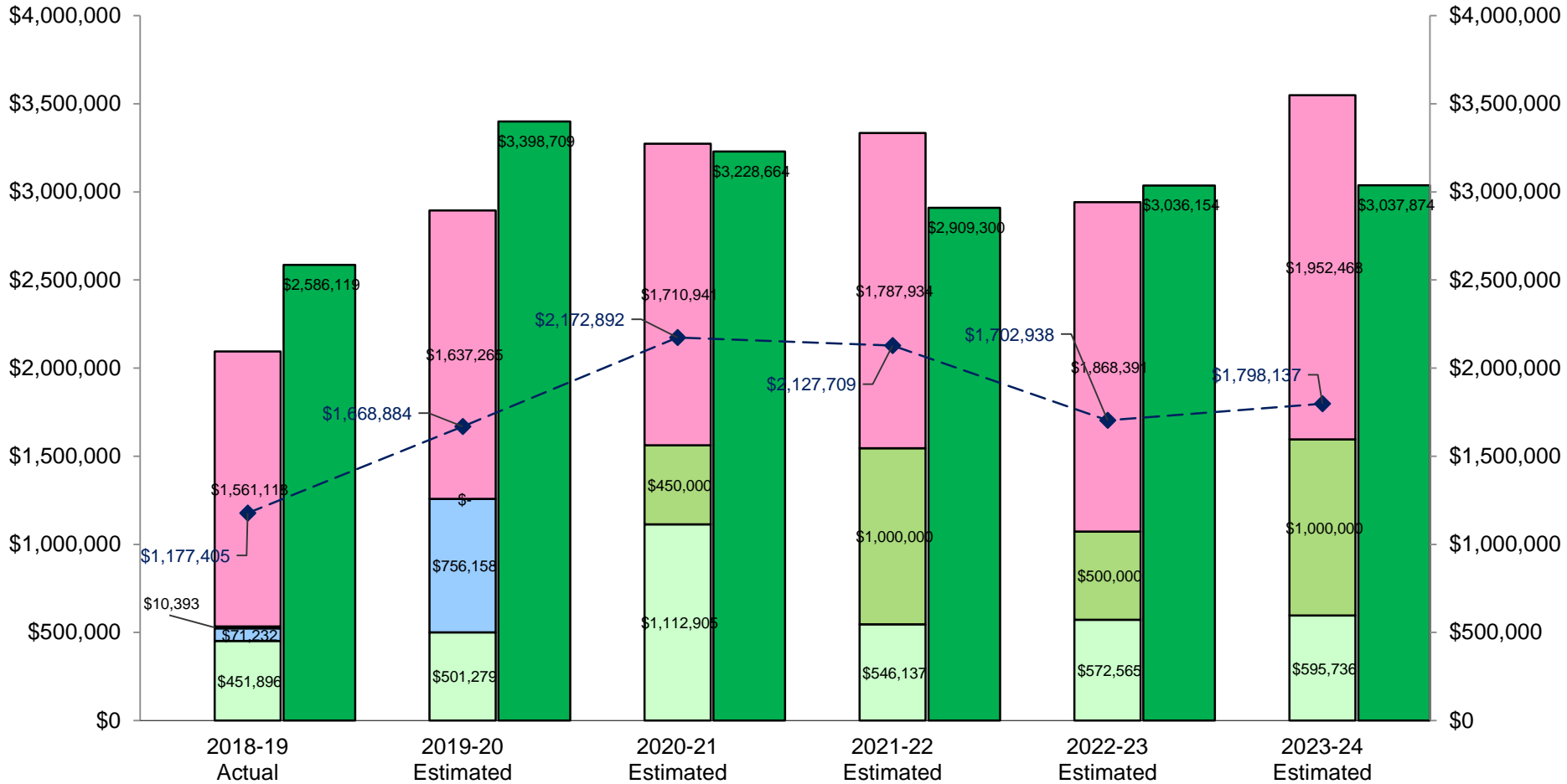
Source: Silicon Valley Clean Water



ELEMENTS OF THE SEWER SERVICE RATES

Emerald Lake Heights SMD Expenditure & Revenue Comparison

- O&M and Regulations
- Repair Construction
- Revenue* (w/ proposed and estimated future rate increases)
- District CIP
- Transport & Treatment
- ◆ Fund Balance (Beg. FY)



PROPOSED RATES

	Sewer Service Rate (\$/Year Per Equivalent Residential Unit)			
	Current Rate FY 2019-20	Proposed Rates		
		FY 2020-21	FY 2021-22	FY 2022-23
Emerald Lake Heights SMD	\$1,490	\$1,565 <i>(+ \$75/yr or \$6.25/mo)</i>	\$1,640 <i>(+ \$75/yr or \$6.25/mo)</i>	\$1,715 <i>(+ \$75/yr or \$6.25/mo)</i>

RATE SETTING TIMELINE

Key Dates	Actions
June 2, 2020	Introduce Ordinance with proposed sewer service rate and set Public Hearing for July 21, 2020.
June 5, 2020	Send Proposition 218 notice (45 days prior to public hearing) to property owners with proposed rate.
July 21, 2020	Hold public hearing, adopt Ordinance setting rate, and adopt FY 2020-21 Sewer Service Charges Report based on the adopted rate.



**Emergency Response
24 Hours a Day, 7 Days a Week**

Mainline (Blockage)

Customer Sewer Laterals

**Call (650) 363-4100 to Report
Sewer Overflows**



THANK YOU!

Please e-mail comments and questions to:
sewers@smcgov.org

Information is available on our website at:
<http://www.smcgov.org/sewers>



**The toilet is only meant
to flush the three P's—
pee, poop and paper.**
toilet

